

Jan Mikuni

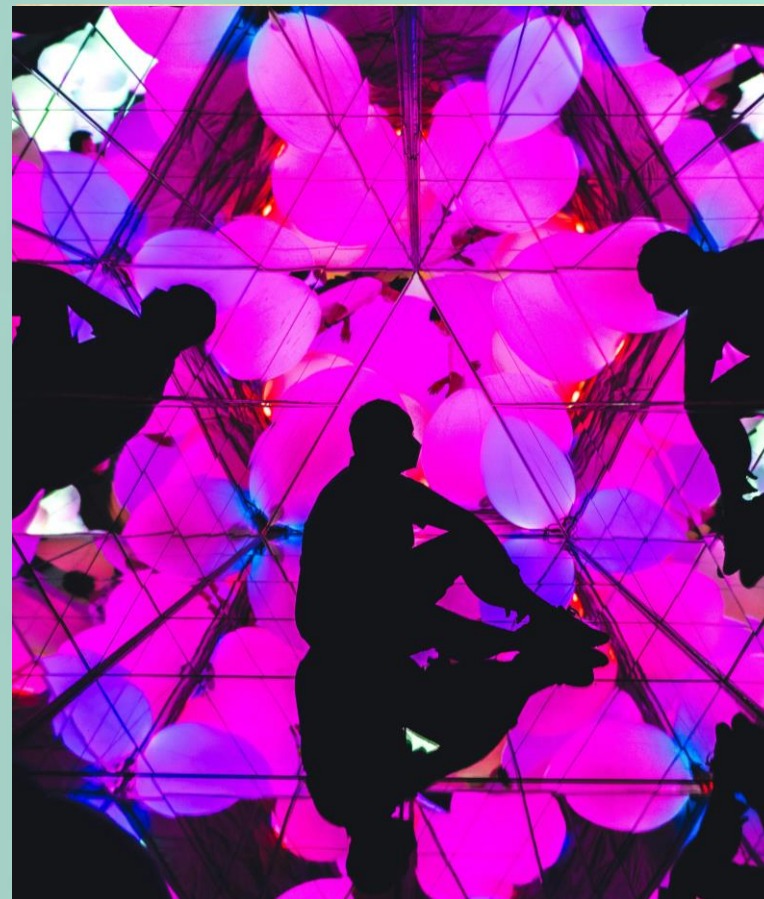
Postdoctoral Researcher at Department of Psychology, Uni Wien

Japanese Science Day 05.10.2024. TU Wien

Collaborating partners in Japan

- : Keio University**
- : Waseda University**
- : Tokyo University**

Psychology × Aesthetics



A brief history on developing collaboration

2017:
Starting PhD at Keio University

2018-2019 (7months):
Visiting PhD at Uni Wien
Overseas Challenge Program for Young Researchers
(JSPS)

2019:
Joint doctoral program (cotutelle de these)
Keio University & Uni Wien

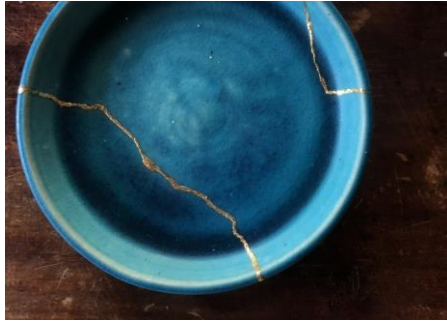
2019-2021 (1.5years):
PhD program at Uni Wien
Monbukagakusho scholarship program (KÜ Japan)

2022:
Competing PhD at Keio & Uni Wien

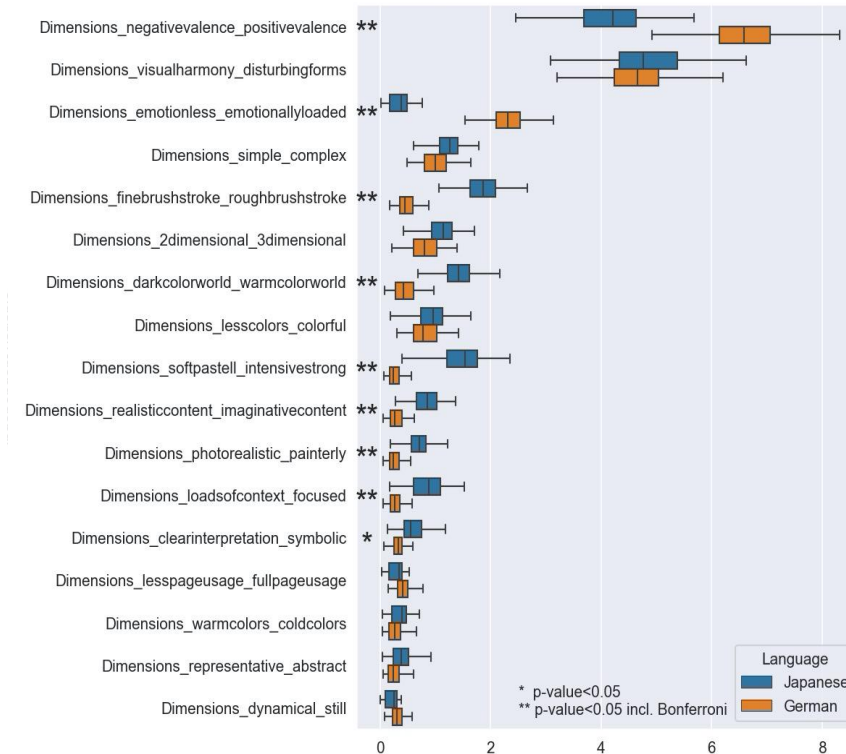
Present:
Postdoctoral researcher at Uni Wien

The impact of culture on art engagement and evaluations

Impact of frequent exposure to asymmetry



What features in art constitute *beauty*?



Challenges?

- **Language / Communication barrier**
- **Differences in policy/equipment across countries/institutions**
- **Balance between being international vs. being visible in the local communities**

Worth it?

100%!

- **Cross-cultural components have strong scientific benefit**
- **Building connections between the two universities**
- **Importantly... It's fun!**

Jan Mikuni

jan.mikuni@univie.ac.at

<https://www.urbanartandgreen.org/>

Thank you

SCAN ME!

